



# MENTAL HEALTH AND THE LAW

- Crisis Intervention Training (CIT) Cadre & Coordinator Co-Response Model
- Housing Stability for Youth in Courts
- Creating a Center in Mental Health, Policy and the Law



# **Crisis Intervention Training (CIT) Cadre & Coordinator Co-Response Model**

Captain Ron Harding  
Redmond Police Department  
Susie Kroll, MA, MHP, LMHC  
Mental Health Professional

# OVERVIEW OF CHALLENGE

**How has traditional law enforcement changed?**

- ❖ From the law enforcement perspective
- ❖ From the mental health and substance use perspective

# OVERVIEW OF CHALLENGE

## How has traditional law enforcement changed?

- ❖ mental health and substance abuse
- ❖ increased social services intersections
- ❖ criminality impacted/influenced by
- ❖ co-morbidity of physical, mental, substance abuse health in conjunction with diverse needs for service

# PROGRESS TO DATE

What has been done so far to address the challenge?

- ❖ Iterations of CIT models
- ❖ Increased access to and requirement of police education/training
- ❖ Beginnings of Co-responder models becoming the expectation rather than the exception
- ❖ Attempts to un-silo providers from 1<sup>st</sup> responders

# MOVING FORWARD

**Short Term:** budgeting and systems support of co-responder models as a national standard

Effective training/integration of qualified MHPs to departments

**Long Term:** HIPAA exceptions to augment continuity of care with non-traditional agencies

Development of 50/50 understanding of roles of each service provider in this system

# TAKING ACTION

- ❖ County, State, and Federal recognition of the value of CIT Cadres and Co-Response Models.
- ❖ The expectation that this **IS** a budget line item
- ❖ Vetting/training/cultural integration of MHPs and law enforcement
- ❖ De-stigmatization of mental health, substance abuse, and law enforcement in crisis response

# VISION

- ❖ The expectation of de-escalation, referral, and accountability an equitable solution in a 1<sup>st</sup> responder crisis call for service
- ❖ The immediate connection to vetted services with appropriate services (warm introduction)
- ❖ The un-siloing and minimization of an adversarial interaction with mental health, social services, substance abuse, and policing



# HOW YOU CAN GET INVOLVED

- ❖ Write to or speak at City and County Council meetings insisting this be the expectation
- ❖ Write to or lobby for State and Federal funding (not just grants)
- ❖ Work to engage diversity in MHPs and social services integration into community policing
- ❖ Sign up for a police community academy and learn about what your local PD does!

# HOW YOU CAN GET INVOLVED

**Captain Ron Harding**

**Redmond Police Department**

**[rjharding@redmond.gov](mailto:rjharding@redmond.gov)**

**Susie Kroll, MA, MHP, LMHC**

**Mental Health Professional**

**[skroll@redmond.gov](mailto:skroll@redmond.gov)      425/589-4507**





# Housing Stability for Youth in Courts (HSYNC)

Sarah Cusworth Walker, PhD

Research Associate Professor

UW Psychiatry and Behavioral Sciences

# Partners

## **Funding generously provided by**

Raikes Foundation

Block-Leavitt Foundation

Premera Blue Cross

Office of Youth Homelessness Prevention and Protection/DSHS/WA

## **Site Partners**

Kitsap County (Juvenile Court and Dept of Human Services/Coffee Oasis)

Snohomish County (Juvenile Court and Cocoon House/Youth Action Council)

Okanogan County (Juvenile Court and Community Action Council)

King County (Juvenile Court and YouthCare)

Washington State Center for Court Research

## **UW Team**

Kristin Vick, MPA

Lars Almquist, PhD Candidate

Emi Gilbert, BS

Noah Gubner, PhD

# OVERVIEW OF CHALLENGE

Youth involved with the justice system have rates of behavioral health need that **far exceed** the general population:

**9/10**

**Exposed to  
traumatic events**

**7/10**

**Problematic  
substance use**

**3/10**

**Significant  
impairment due  
to mental health  
need**

# OVERVIEW OF CHALLENGE

Behavioral health is significantly influenced by a person's **Social Determinants of Health** including Housing, Neighborhood Environment, and Economic Stability.



**Nearly 50% of  
justice involved  
youth will  
experience  
Housing Instability**

# OVERVIEW OF CHALLENGE

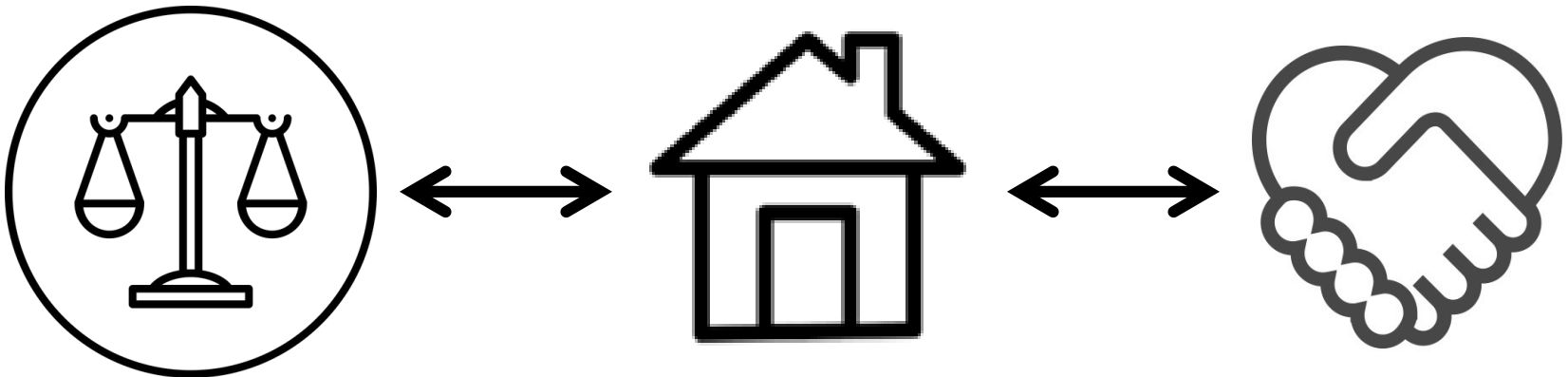
Most of youth housing stability incidents are

**PREVENTABLE**

**60% due to home conflict**

# PROGRESS TO DATE

We are currently working with four sites in the state to implement and pilot test a system-linkage model





# MOVING FORWARD

1

Identify a highly **effective** approach for engaging identified families into family conflict prevention and intervention services.

2

Increase the availability of **low barrier** family information and support resources

3

Support the **capacity** of counties to maintain a continuum of family prevention, intervention and housing services

# TAKING ACTION

1

Continued funding to **extend** the research beyond the pilot (2 years)

2

Develop online materials for delivering high quality information and resources **direct** to families

3

Advocate to fund local navigator positions and **intensive** family support programs

# VISION

Effective system coordination and community capacity means

**Youth and families receive the support they need, when they need it**

Leading to better mental and behavioral health, more housing stability, **bright** futures

# HOW YOU CAN GET INVOLVED

I can advise the project on successful strategies for engaging families and/or youth in services

My organization can be listed as offering family support services in one of the pilot counties

I want to contribute my programming skills to develop an online, self-guided curriculum to support families of youth experiencing housing instability and/or behavioral health needs

I want to help fund the local navigator positions for the pilot program

I want to write a letter to my legislator about the need for more intensive, in home services for families of youth experiencing high conflict or neglect





# **Creating a Center in Mental Health, Policy and the Law**

Jennifer Piel, MD, JD

# OVERVIEW OF CHALLENGE

- 1 in 2 Americans with a serious mental illness will be arrested in their lifetime<sup>1</sup>
- Individuals with SMI are 3x more likely to be treated in a forensic setting<sup>2</sup>
- Mental illness was a factor in a quarter of fatal police shootings in 2017<sup>3</sup>

<sup>1</sup> Draine et al. (2002). *Psychiatric Services*, 53(5), 565-573

<sup>2</sup> Treatment Advocacy Center. <https://www.treatmentadvocacycenter.org/>

<sup>3</sup> Washington Post (2016). *Fatal Force*

# OVERVIEW OF CHALLENGE

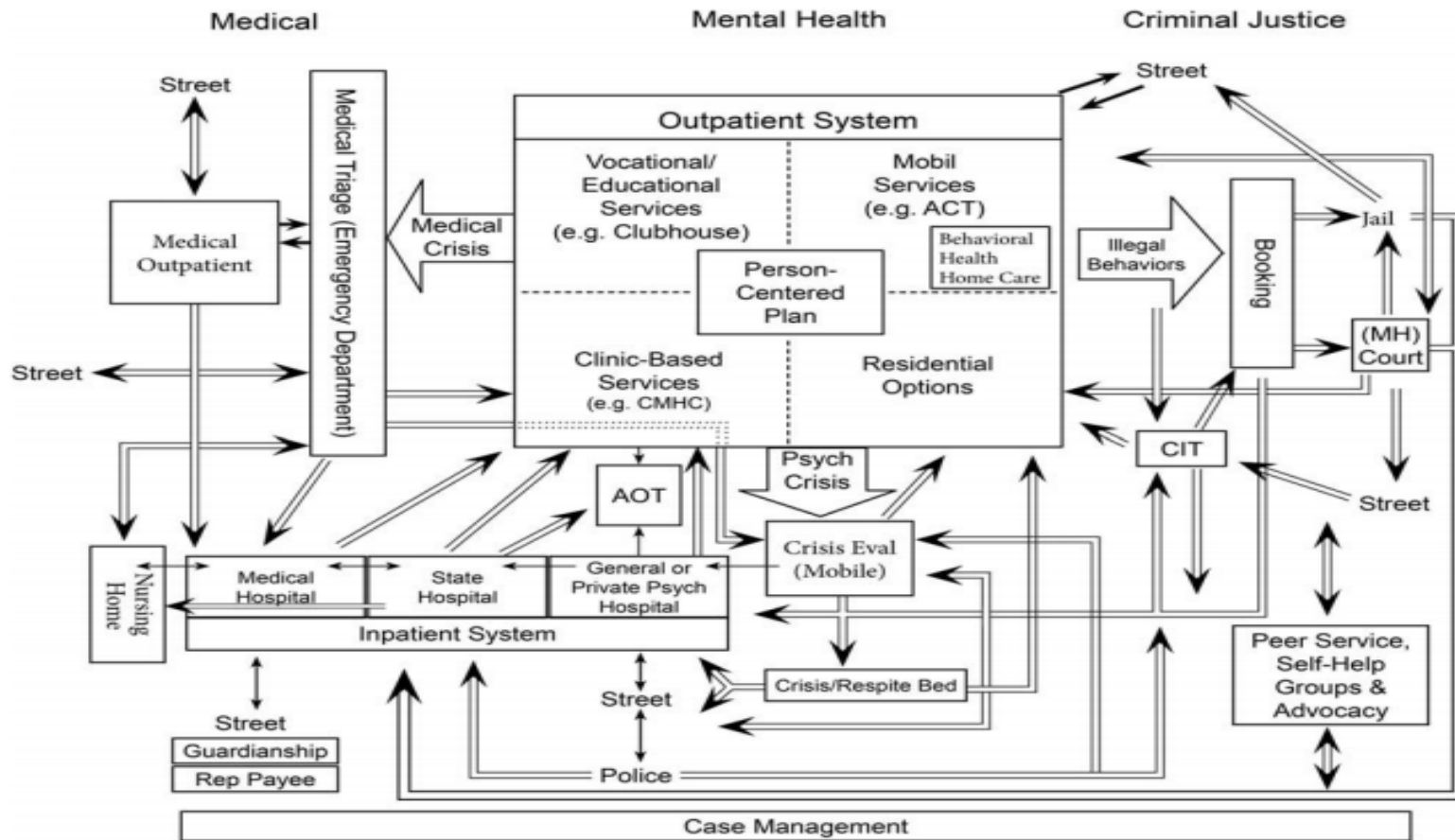


FIGURE 1. A dis-integrated system of care and treatment for persons with chronic mental illness.

Geller, J. (2015). The first step in health reform for those with serious mental illness: Integrating the dis-integrated mental health system. *The Journal of Nervous and Mental Disease*, 203(12). 909-919.

# OVERVIEW OF CHALLENGE

- Forensic mental health<sup>1</sup>



- Acknowledged and respected subspecialty
- Demand for specialized forensic training is high
- Limited subspecialty forensic training in Washington<sup>2</sup>

<sup>1</sup> AAPL, Ethics Committee (2005)

<sup>2</sup> Piel J, et al. (2019). Creating a State-Academic Partnership to Advance a Forensic Teaching Service: Benefits and Barriers, *J Forensic Sci*



# PROGRESS TO DATE

- Performed systematic literature review
- Surveyed forensic training directors
- Investigated ways to advance research and empirically-supported practices
- Assessed state of forensic education and workforce in Washington
- Consulted with other Centers nationally

# MOVING FORWARD

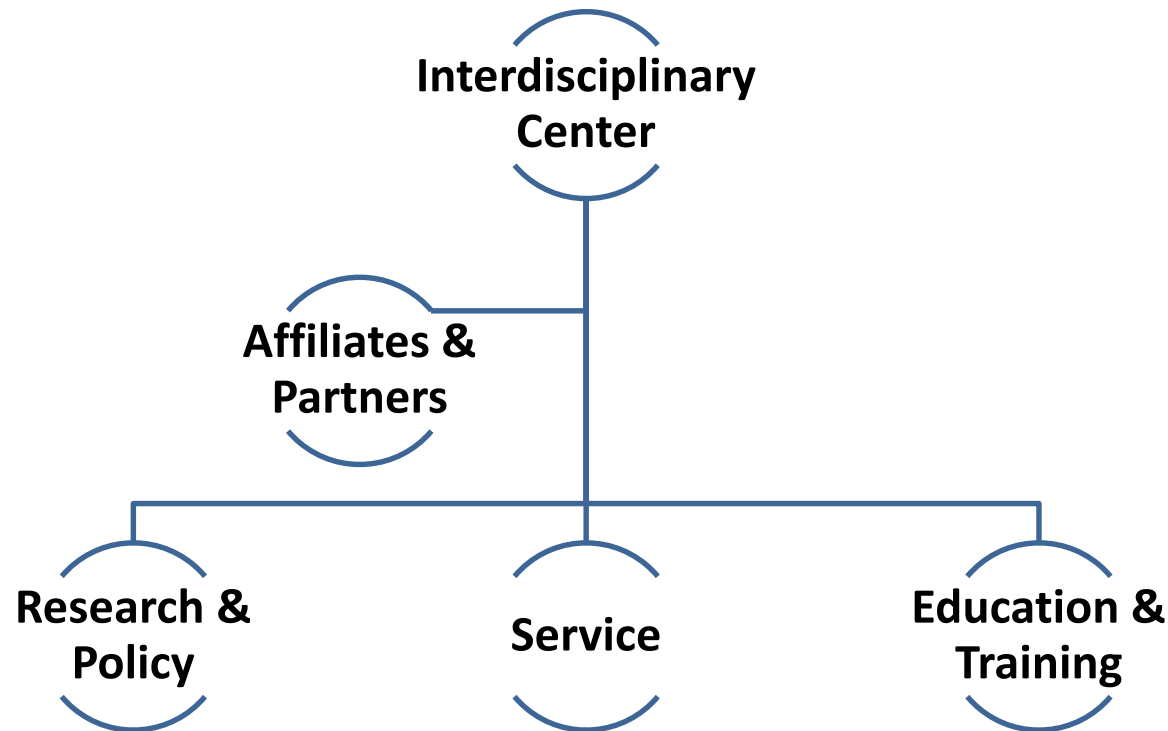
A multidisciplinary, university-based center will better prepare the state to make data-driven decisions customized to the needs, resources, and assets of our state's systems of care.



# TAKING ACTION

University of Washington

Center for Mental Health, Policy, and the Law



# HOW YOU CAN GET INVOLVED

- Join our network of academics and stakeholders with training, research, or lived experience in forensic mental health
- Participate in consultation groups to advance forensic mental health education, research, and clinical/evaluation services
- Identify existing programs and resources that align with the Center's goals
- Recommend clinical sites for future resident and fellow training
- Help us spread the word; find and engage potential partners!



## MENTAL HEALTH AND THE LAW PANEL

- **Shelia Capestany**, Director, Best Start for Kids
- **Senator Manka Dhingra**, Washington State Senate
- **Dan Nelson**, Crisis Intervention Coordinator, Seattle Police Department